

PRODUCT DATA SHEET

2024-04-10



Article number:

4110000311GS 

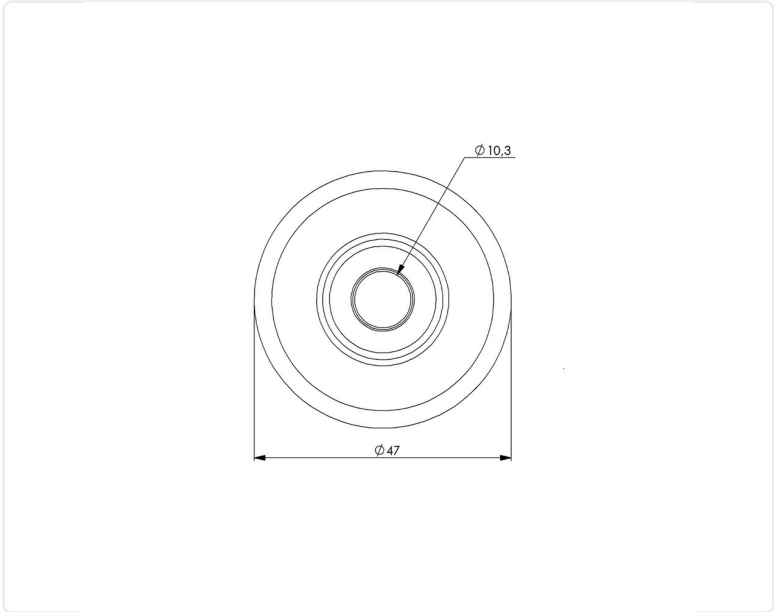
Swivel castor 100 mm, TPE-tyre

Swivel bracket. Made of zinc-chromatized pressed sheet metal with double ball race swivel. Center hole fitting. Riveted wheel axle. Wheel with grey TPE-tyre. Hub made of black PP. Plain bearing.



Image may differ from the actual product.*

DIMENSIONS



SPECIFICATIONS

Diameter	100 mm
Totalt height	120 mm
Load Capacity (dynamic)	55 kg
Castor model	Swivel
Fitting	Centre hole
Material Tread	TPE
Bearing	Plain bearing
Thread hardness (Shore°)	85° Shore A
Centre Bolt Hole	10.2 mm
Width of tread	24 mm
Material Hub	Polypropylen (pp)
Wheel Pattern	EN 12530
Color Tread	Grey
Teststandard	EN 12530
Offset	37 mm
Material Thickness Bracket	2 mm
Swivel radius	85 mm
Product Weight	0,31 kg

Numeric values in the technical specification can be nominal/rounded to the cneares standard dimension. To see exact values, please use the drawing.