

PRODUCT DATA SHEET

2024-04-09



Article number:

4003620431GG

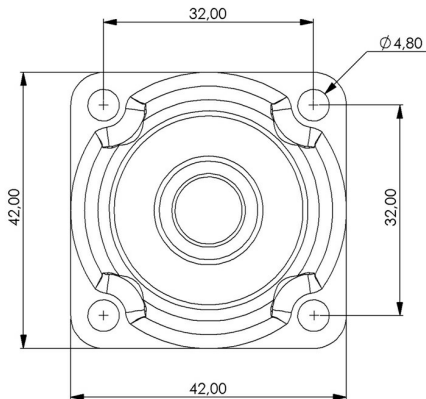
Swivel castor 33 mm, TPU-tyre

Swivel bracket. Made of zinc-chromatized pressed sheet metal with double ball race swivel. Top plate fitting. Riveted wheel axle. Wheel with grey TPU-tyre. Hub made of grey PP with threadguards. Ball bearing.



Image may differ from the actual product.*

DIMENSIONS



SPECIFICATIONS

Diameter	33 mm
Totalt height	46 mm
Load Capacity (dynamic)	20 kg
Castor model	Swivel
Fitting	Top plate
Material Tread	Polyurethane
Bearing	Ball bearing
Plate Size	42x42 mm
CC Distance	32x32 mm
Thread hardness (Shore°)	95° Shore A
Width of tread	17 mm
Material Hub	Polypropylen (pp)
Color Tread	Grey
Teststandard	EN 12530
Offset	19 mm
Material Thickness Bracket	1,5 mm
Materialthickplate	1,5 mm
Swivel radius	36 mm

Numeric values in the technical specification can be nominal/rounded to the cneares standard dimension. To see exact values, please use the drawing.