

PRODUCT DATA SHEET

2024-04-10



Article number:

5110006433DS

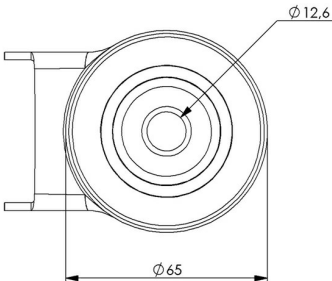
Braked castor 100 mm, wheel brake, TPU-tyre

Swivel bracket with wheel brake. Made of zinc-chromatized pressed sheet metal with double ball race swivel. Center hole fitting for M12 screw. Wheel axle with nut. Wheel with blue TPU-tyre. Hub made of black Nylon/PA6 with threadguards. Ball bearing.



Image may differ from the actual product.*

DIMENSIONS



SPECIFICATIONS

Diameter	100 mm
Totalt height	132 mm
Load Capacity (dynamic)	140 kg
Castor model	Brake
Fitting	Centre hole
Material Tread	Polyurethane
Bearing	Ball bearing
Thread hardness (Shore°)	98° Shore A
Centre Bolt Hole	12.4 mm
Brake	Wheel brake
Width of tread	36 mm
Material Hub	Nylon PA6
ESD	No
Stainless	No
Wheels	No
Heat Resistant	No
Fixed	No
Dyn. Load Capacity (4km/)	140 kg
Color Tread	Blue
Material Type	RoHS (EU) - Approved
Offset	40 mm
Material Thickness Bracket	2,5 mm
Product Weight	0,81 kg
Temperature Range	-20°C to +60°C

Numeric values in the technical specification can be nominal/rounded to the cneares standard dimension. To see exact values, please use the drawing.