

PRODUCT DATA SHEET

2024-04-10



Article number:

5A08660312GSX

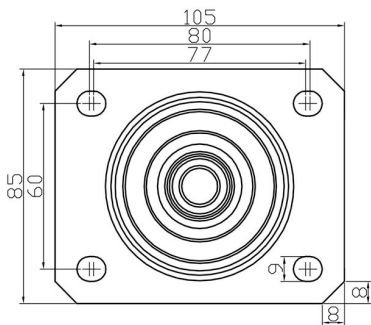
Swivel castor 80 mm, rubber-tyre, stainless

Swivel bracket. Pressed stainless steel with double ball race swivel. Top plate fitting. Wheel axle with nut. Wheel with grey rubber-tyre. Hub made of black PP. Plain bearing.



Image may differ from the actual product.*

DIMENSIONS



SPECIFICATIONS

Diameter	80 mm
Totalt height	108 mm
Load Capacity (dynamic)	50 kg
Castor model	Swivel
Fitting	Top plate
Material Tread	Rubber
Bearing	Plain bearing
Plate Size	105x83 mm
CC Distance	80x60 mm
Thread hardness (Shore°)	85° Shore A
Width of tread	27 mm
Material Hub	Polypropylen (pp)
Top Hole	9 mm
Stainless	Yes
Dyn. Load Capacity (4km/)	50 kg
Color Tread	Grey
Material Type	RoHS (EU) - Approved
Offset	36 mm
Material Thickness Bracket	2 mm
Materialthickplate	2 mm
Product Weight	0.66 kg
Temperature Range	-20°C to +60°C

Numeric values in the technical specification can be nominal/rounded to the chaeas standard dimension. To see exact values, please use the drawing.