

# PRODUCT DATA SHEET

2024-04-10



Article number:

5508660432PZB-ALU 

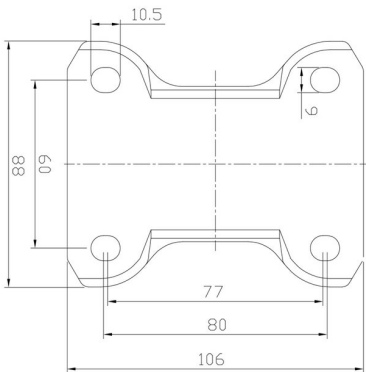
Fixed castor 80 mm, elastic convex PU-tyre

Fixed bracket made of zinc-chromatized pressed sheet metal. Top plate fitting. Wheel axle with nut. Wheel with green elastic convex PU-tyre. Hub made of aluminium. Ball bearing.



Image may differ from the actual product.\*

## DIMENSIONS



## SPECIFICATIONS

Diameter	80 mm
Totalt height	111 mm
Load Capacity (dynamic)	180 kg
Castor model	Fix
Fitting	Top plate
Material Tread	Elastic Polyurethan
Bearing	Double Ball bearing
Plate Size	105x85 mm
CC Distance	80x60 mm
Thread hardness (Shore°)	83° Shore A
Width of tread	40 mm
Material Hub	Aluminium
Top Hole	10x9 mm
Fixed	Yes
Dyn. Load Capacity (4km/)	180 kg
Color Tread	Green
Material Type	RoHS (EU) - Approved
Material Thickness Bracket	3 mm
Materialthicknessplate	3 mm
Product Weight	0,8 kg
Temperature Range	-20°C to +70°C

Numeric values in the technical specification can be nominal/rounded to the nearest standard dimension. To see exact values, please use the drawing.